

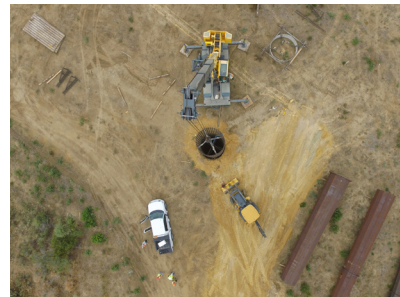
OPERATIONAL Units

Can-Fer

Can-Fer Utility Services is a premier specialty contractor with experienced personnel and resources in the transmission, distribution, substation and gas sectors. We pride ourselves on more than a decade of providing an unwavering commitment to quality, safety and efficiency. With foundation capabilities ranging up to 85 feet deep and 16 feet in diameter, Can-Fer has the experience and resources to complete the most demanding foundation projects.



A QUANTA SERVICES COMPANY



Can-Fer's team is highly qualified at mitigating subsurface construction challenges relating to rock drilling, slurry processed excavations, and temporary/permanent vibratory caissons. Our experience ranges from drilled pier installation, to pole erection, to turnkey substation construction. Specialty equipment includes customized short mast, high torque drill rigs that allow for efficient low-clearance centerline rebuilds. With a fleet of over 15 rigs and more than 100,000 cubic yards of concrete poured in the last two years, we are uniquely positioned to meet the demands of any project.



4308 N Barker Road
Spokane Valley, WA 99027

www.quantasubsurface.com

